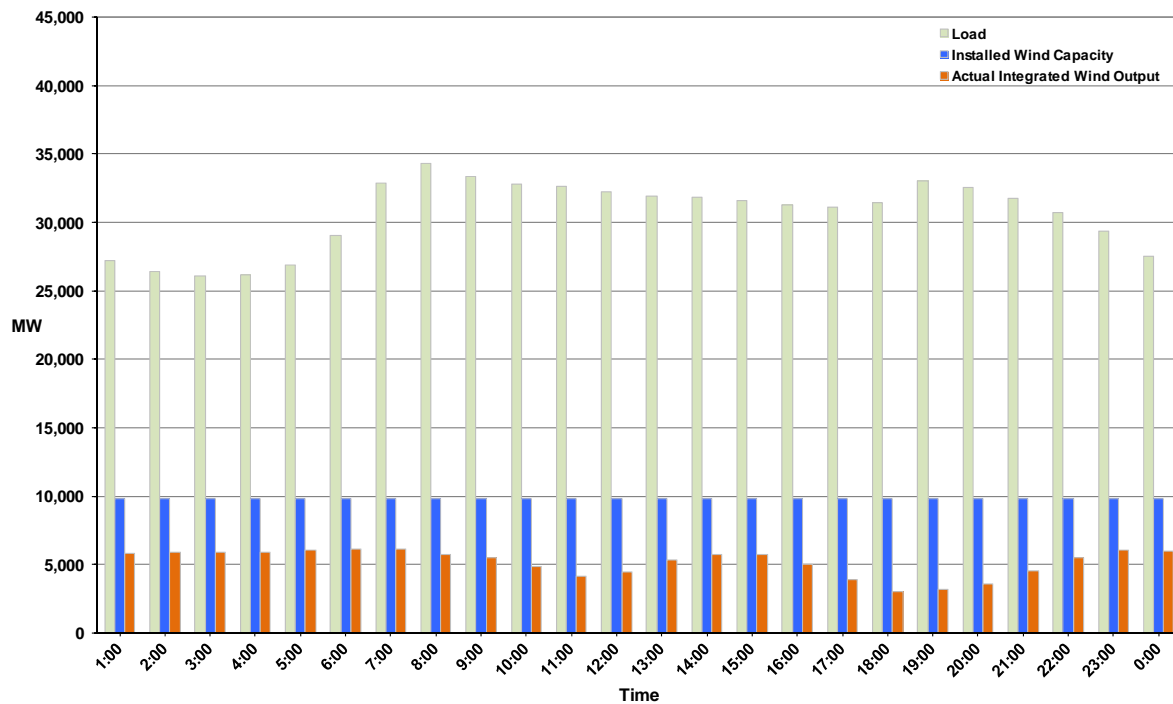




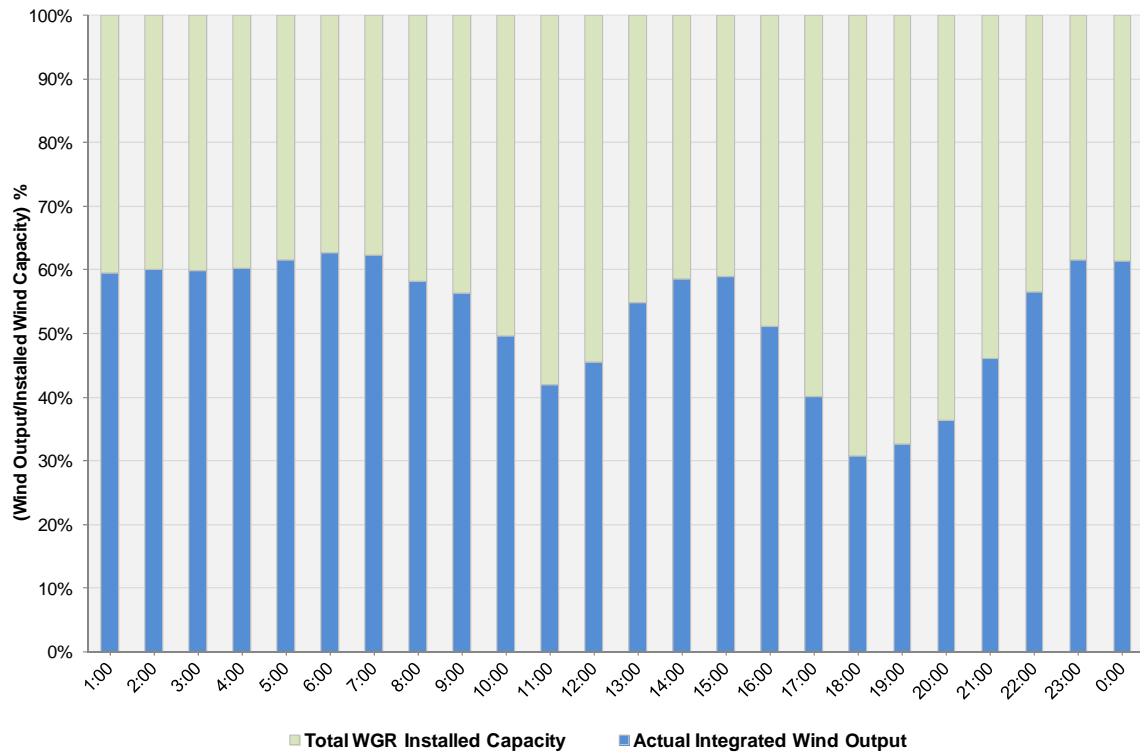
ERCOT Grid Operations Wind Integration Report: 01/06/12

Peak Load	34,324 MW
Load Peak Hour (HE)	08
Wind over Peak	5,704 MW
Wind Record 10/07/11	7,400 MW
Max Wind Value	6,381 MW
Wind Peak Time	06:19
Wind Integration %	19.64%

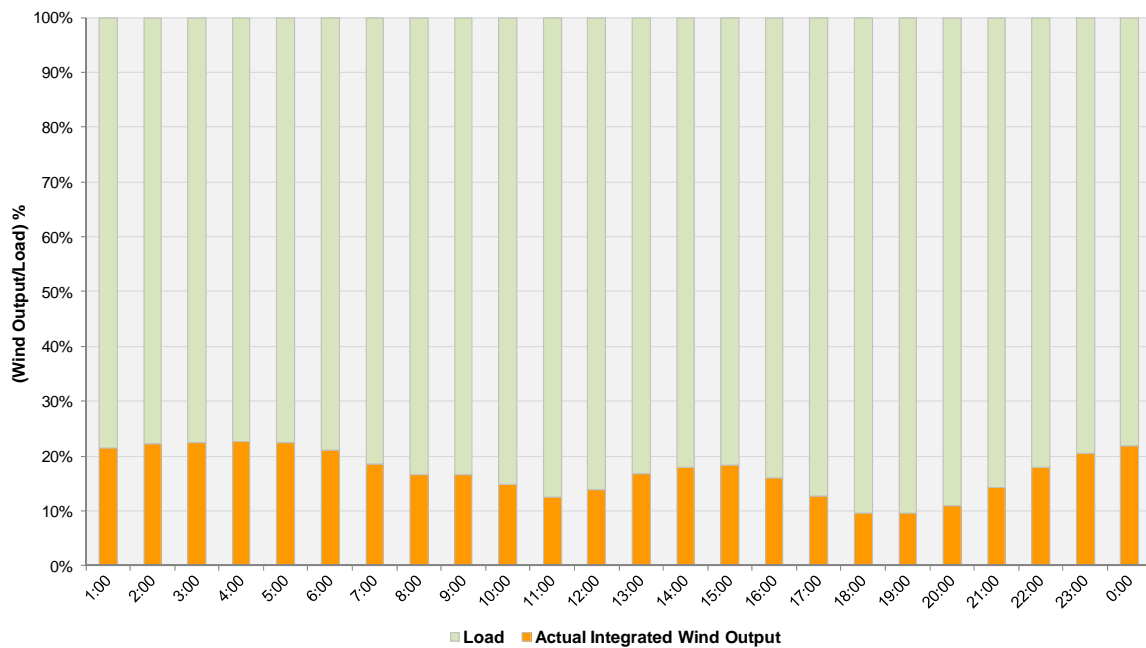
Hourly Average Actual Load vs. Actual Wind Output
01-06-2012



Actual Wind Output as a Percentage of the Total Installed Wind Capacity
01-06-2012



Actual Wind Output as a Percentage of the ERCOT Load
01-06-2012



ERCOT Load vs. Actual Wind Output 12/30/2011 - 1/6/2012

